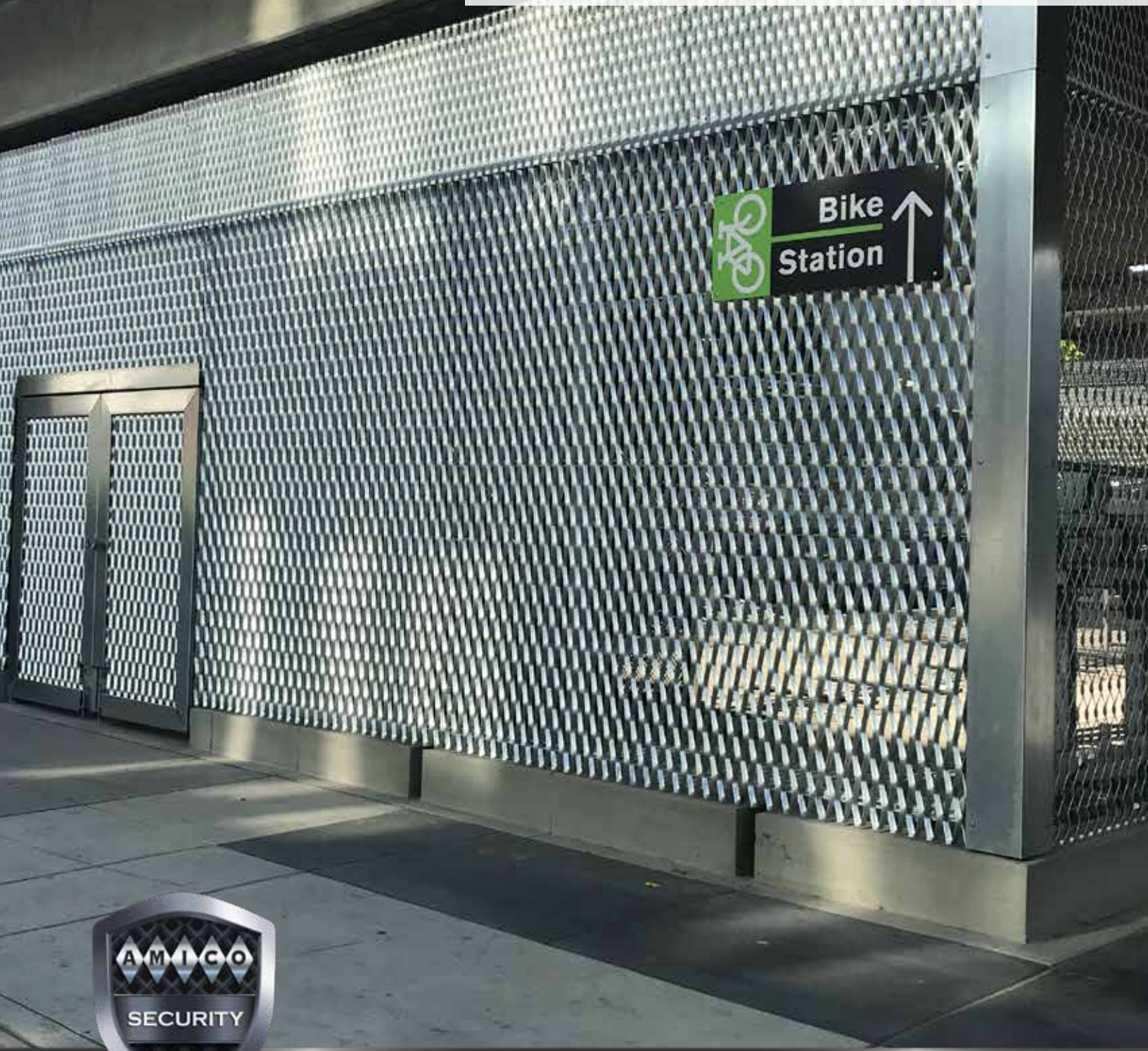


APEX Architectural Expanded Products



HIGH-QUALITY EXPANDED MESH PRODUCTS

AMIGUARD® APEX Fencing



AMICO Security has created **AMIGUARD® APEX Fencing**, a new line of high-quality Architectural Expanded Products. The APEX line offers a unique combination of opaqueness, translucency, texture and structural integrity. The ability to design unique mesh patterns in combination with engineered fastening systems allows AMICO to partner with you on a project from design development through installation.





What is AMICO Mesh

The manufacturing process was first patented in the 1880's, and despite the amount of time which has elapsed since then, the process remains true to the original idea. Sheets of metal are fed into the expanding machine. The metal is sheared and then stretched in a single process creating the apertures and therefore expanding the metal. Custom knives can be manufactured to create exclusive designs such as the APEX meshes.



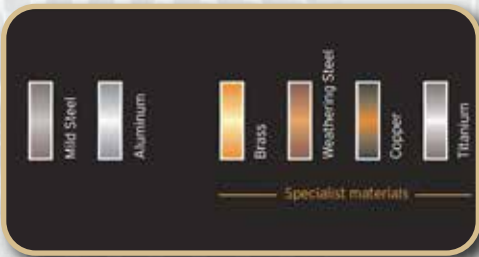
APEX 01 Mesh

APEX 01	Short Way Pitch	Long Way Pitch	Visual % Open Area	Weight
	3.50"	8.00"	46%	0.98 lbs/sq ft



APEX 03 Mesh

APEX 03	Short Way Pitch	Long Way Pitch	Visual % Open Area	Weight
	2.50"	6.00"	26%	1.34 lbs/sq ft



Materials

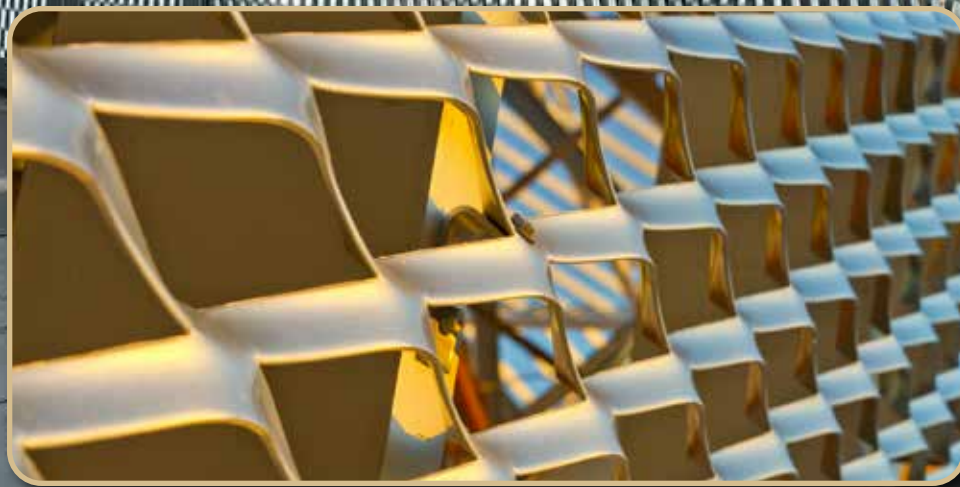
Most malleable materials can be expanded, perforated and produced into mesh. Steel, Stainless steel and aluminum are the most common. Other metals such as brass, copper, gold, platinum and titanium can also be used. Each of these materials has its own "special" characteristics: aluminum gives lightweight longevity, steel brings strength, and copper ages beautifully, maturing to stunning verdigris.



Finishes

AMICO Security offers two highly corrosion resistant finishing options: Hot-Dip Galvanizing and Powder Coating over E-Coating. These finishes help protect and add color to our base materials creating stunning visual effects.





amicosecurity.com • 855-552-6426